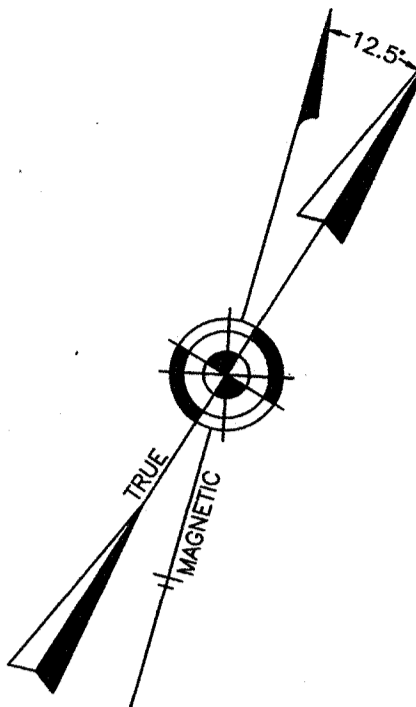
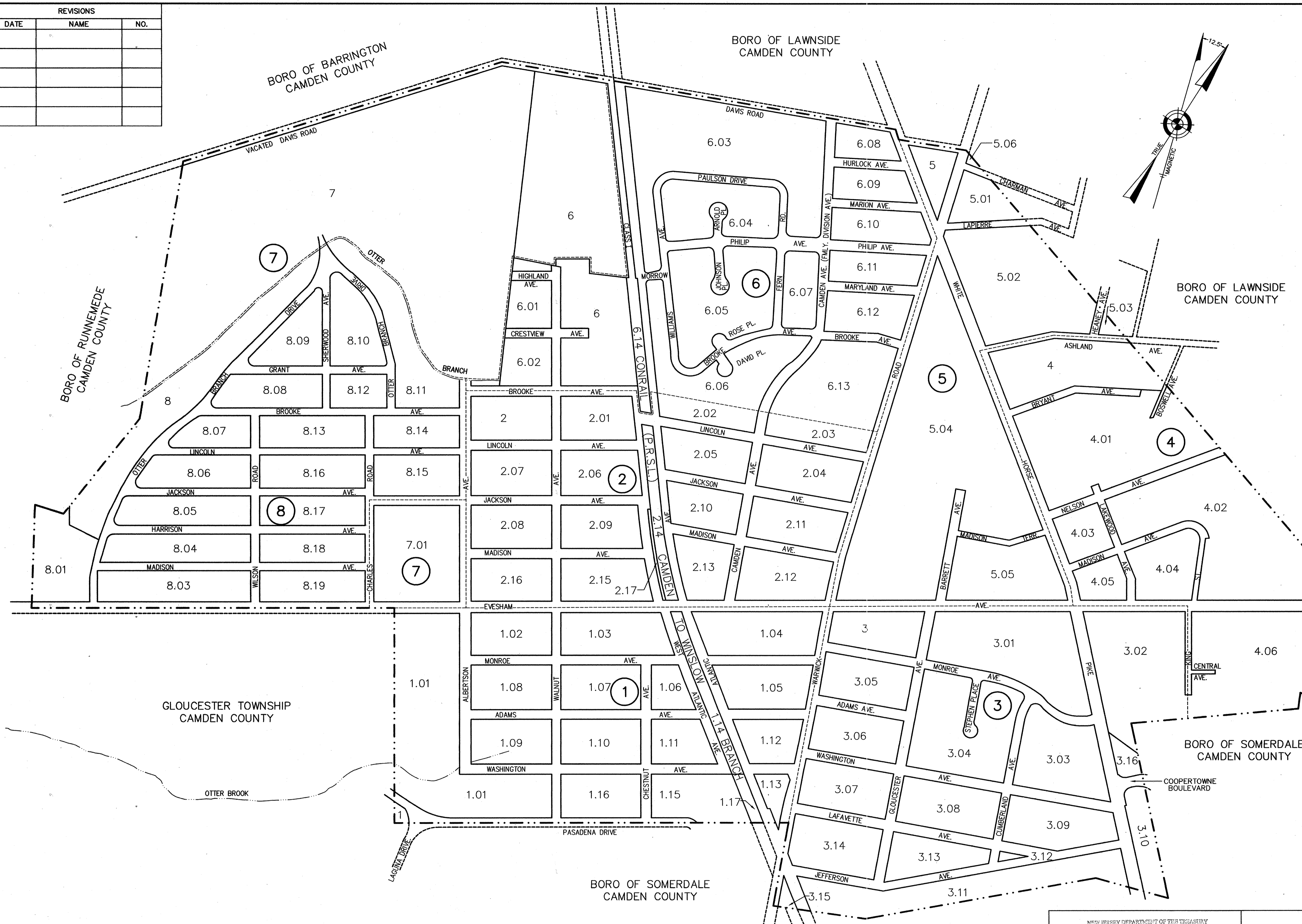


KEY MAP

REVISIONS		
DATE	NAME	NO.

LEGEND	
ASSESSMENT LINE	SYMBOLS
ARTIFICIAL BLOCK LIMIT	—————
BLOCK LIMIT LINE (ON DETAIL SHEETS)	—————
BLOCK LIMIT LINE (ON KEY MAP)	—————
BOUNDARIES OF SPECIAL TAXING DISTRICTS	—————
COUNTY LINE	—————
DEVELOPMENT LOT LINE	—————
EASEMENT OR LEASED LINE	—————
FLOOD HAZARD AREA-F.H.A.	F.H.A.
LOT LINE (PROPERTY LINE)	—————
MUNICIPAL BOUNDARY LINE	—————
PIEDMONT OR BOLTERAD LINE (LABELLED)	PIEDMONT LINE
PIEDMONT OR BOLTERAD LINE (UNLABELLED)	BOLTERAD LINE
REVISION BLOCK LINE	—————
SHEET BORDER LINE	—————
SHEET LIMIT LINE (ON KEY MAP)	—————
SHEET MATCH LINE	—————
SHEET TRIM LINE	—————
SPACE FOR APPROVAL STAMP	—————
STATE LINE	—————
STREAM & WATER LINES	—————
STREAM AND WATER LINES (IF LOT LINE)	—————
STREETS AND ROADS	—————
TITLE BLOCK LINE	—————
WETLAND AREA - W.L.A.	—————



- NOTES:
- 1) THE AREAS, BOUNDARIES AND DIMENSIONS, SHOWN ON THIS TAX MAP ARE DERIVED FROM GROUND SURVEYS, AERIAL SURVEYS, AND RECORDED PLANS, MAPS, DEEDS, WILLS, AND ARE TO BE USED FOR ASSESSMENT PURPOSES ONLY.
 - 2) THIS SHEET HAS BEEN REDRAWN USING COMPUTER AIDED DRAFTING/DESIGN (CAD/D) BASED ON THE MAP PREPARED BY CRAIG F. REMINGTON OF REMINGTON & VERNICK, DATED FEBRUARY, 1975.
 - 3) THIS TAX MAP SUPERSEDES THE TAX MAP APPROVED IN 1931.

I HEREBY CERTIFY THAT THIS MAP AND ANY REQUIRED SURVEY HAVE BEEN MADE UNDER MY IMMEDIATE SUPERVISION, AND COMPLIES WITH THE LAWS OF THE STATE OF NEW JERSEY.

Samuel S. Previtera
 SAMUEL S. PREVITERA, PLS
 N.J. PROFESSIONAL LAND SURVEYOR No. 246503897600

4/2/15
 DATE

NEW JERSEY DEPARTMENT OF THE TREASURY
 DIVISION OF TAXATION
 PROPERTY ADMINISTRATION TAX MAP SECTION
 APPROVED AS A TAX MAP PURSUANT TO THE
 AUTHORITY OF N.J.S.A. 54:1-15 & N.J.S.A. 54:50-1
 FOR THE DIRECTOR, DIVISION OF TAXATION

Shirley Miller CTA
 Shirley Miller, CTA Chief Valuation & Mapping

Sheila Davison CTA
 Sheila Davison, CTA Supervisor Tax Map Section

DATE: MAR 26 2015 SERIAL NO. 1015

KEY MAP
 BOROUGH OF MAGNOLIA
 CAMDEN COUNTY, NEW JERSEY

SCALE: 1" = 300'
 FEB. 1975

SAMUEL S. PREVITERA, PLS
 N.J. PROFESSIONAL LAND SURVEYOR No. 246503897600
 BACH ASSOCIATES, PC
 304 WHITE HORSE PIKE
 HADDON HEIGHTS, NEW JERSEY 08035
 (856)546-8611 FAX: (856)546-8612

TO SHOW CONDITIONS AS OF JANUARY, 2012

KEY MAP